

New Double Star in Camelopardalis

Giuseppe Bongiorno

Ciampino (Roma), Italy
EMAIL: giuseppe.bongiorno@yahoo.it

Abstract: This paper describes a proposed new double star in Camelopardalis

During a trial to test the mirrors of my 16" Newtonian telescope, while observing in the constellation of Camelopardalis I found a double star near the pair STF 362 (WDS 03163 +6002).

The latitude-longitude of my observing site was 41° 44' 58" N by 12° 46' 13" E at an altitude of 550 m. The observation was made on December 21, 2011 at 20.15 UTC.

Figure 1 is a POSSII/F/DSS2 image (taken in 1993) obtained through the Aladin Sky Atlas with the new pair located in the center.

I checked the databases of WDS and Aladin Sky Atlas and found no reference for this double star.

In Megastar Atlas, these two stars have the name GSC 3714:389 and GSC 3714:414. As seen in Figure 2, the PPXML Catalog reports the following proper motion values:

Component A = pmRA 17,4; pmDE -16,4.

Component B = pmRA 19,4; pmDE -20,6.

The magnitudes are 8,05 - 11,82.

With the "dist" function in the Aladin Sky Atlas, I obtained position angle and separation measurements of 94.2° and 16.63".

The precise coordinate in Aladin Sky Atlas are 03 16 41.80 +59 59 27.0.

Acknowledgments

This research has made use of the SIMBAD database, operated at CDS, Strasbourg, France.

This research has made use of the Washington Double Star Catalog maintained at the U.S. Naval Observatory.

I am deeply indebted to my friend Giuseppe Mi-

cello for the crucial help in verifying the information on the new, probable double star

References

Brian D. Mason, Gary L. Wycoff, and William I. Hartkopf. Washington Double Star Catalog - <http://ad.usno.navy.mil/wds/>

The Aladin Sky Atlas - <http://aladin.u-strasbg.fr/aladin.gml>

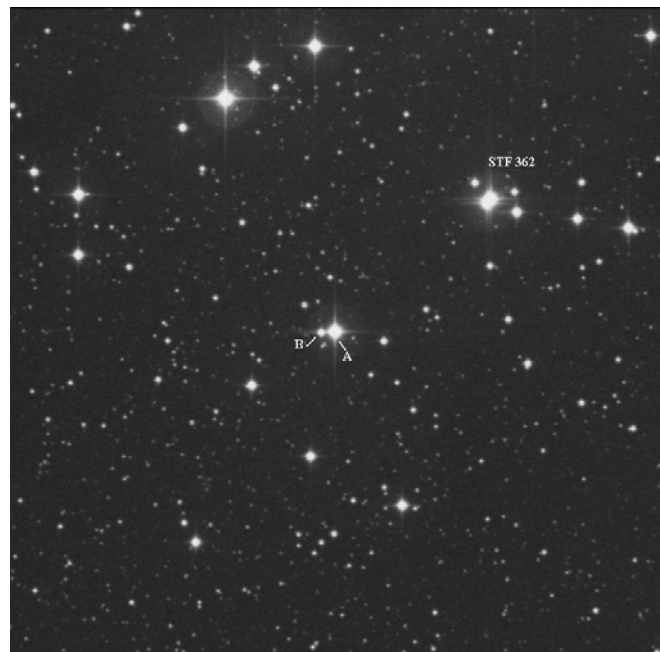


Figure 1: Image of the proposed new double star, labeled A and B in the center.